

# VISION Service RM 200 MD Log

Format: VISION Density Neutron RM Log

Vertical Scale: 1:200

Graphics File Created: 07-Jan-2009 18:09

## PIP SUMMARY

Neutron Samples +

+ Density Samples  
+ ARC Gamma Ray Samples

Rate of Penetration, Averaged over Last  
5ft (ROP5\_RM)

200 (M/HR) 0

ARC Gamma Ray (GR\_ARC)

0 (GAPI) 200

Vertical Hole Diameter (VERD)

6 (IN) 16

Horizontal Hole Diameter (HORD)

6 (IN) 16

Thermal Neutron Porosity (TNPH)

45 (PU) -15

Photoelectric Factor (PEF)

0 (----) 10

Bulk Density Correction (DRHO)

-0.25 (G/C3) 0.25

Density Time After Bit (TAB\_DEN)

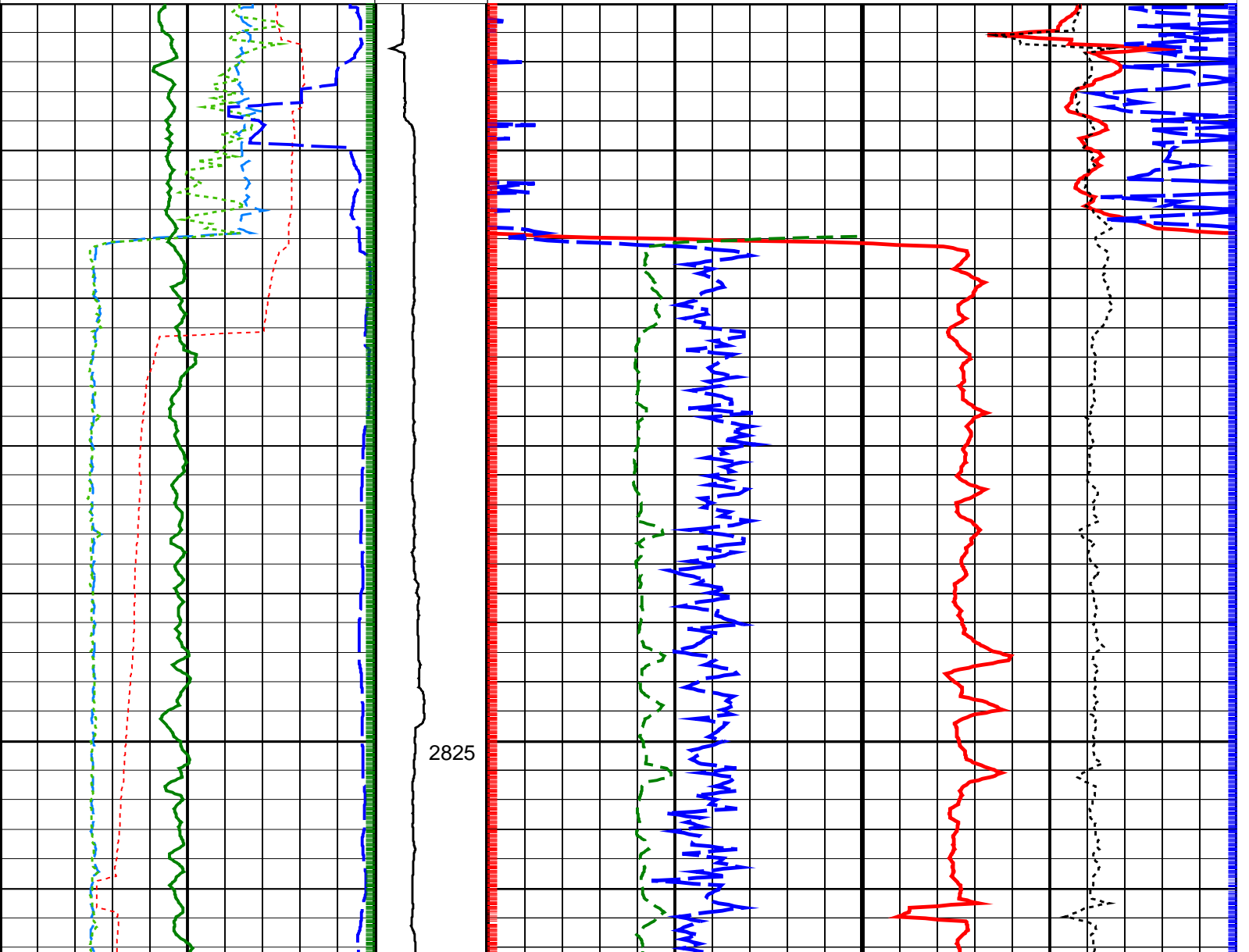
0 (HR) 10

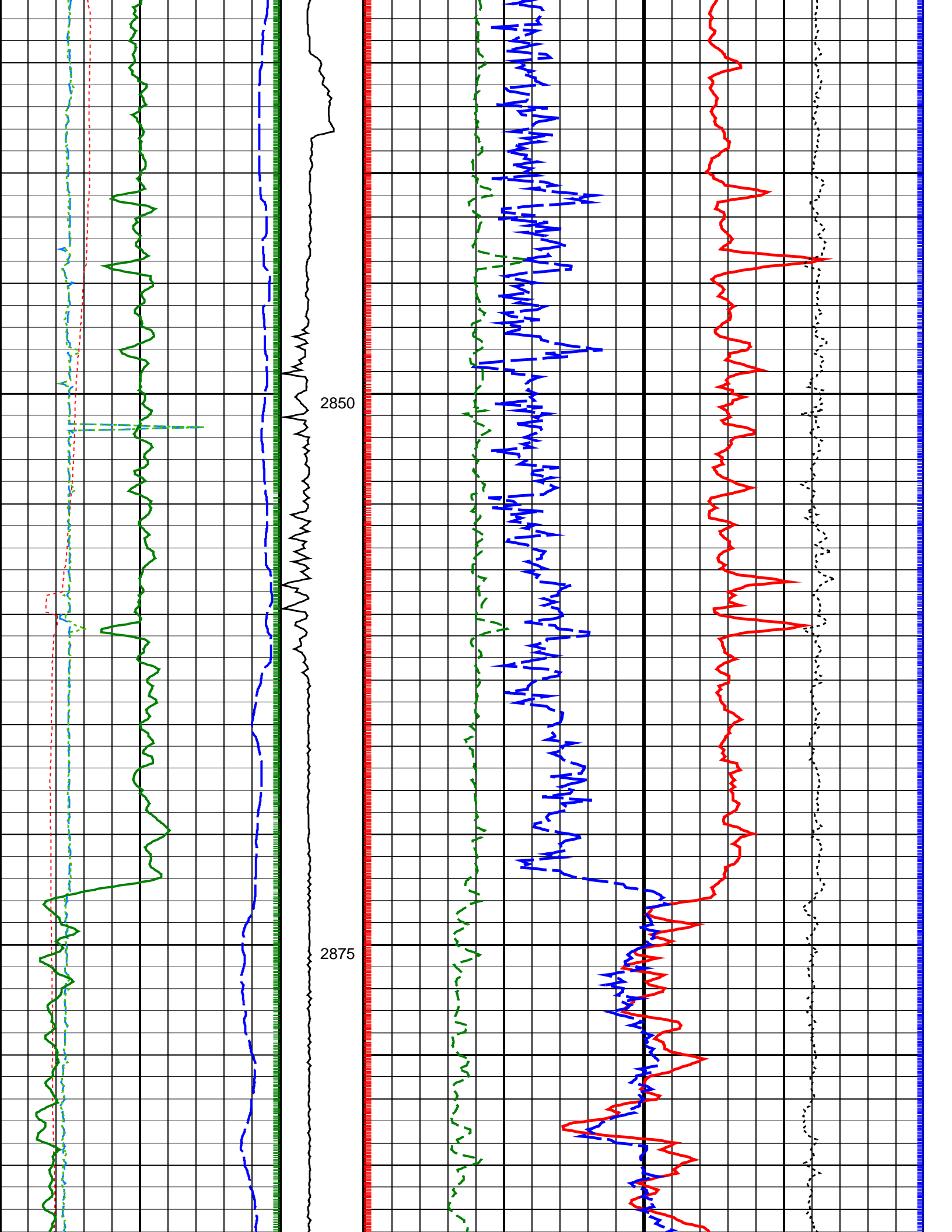
ADN  
Rotational  
Speed  
(RPM\_ADN)  
(RPM)

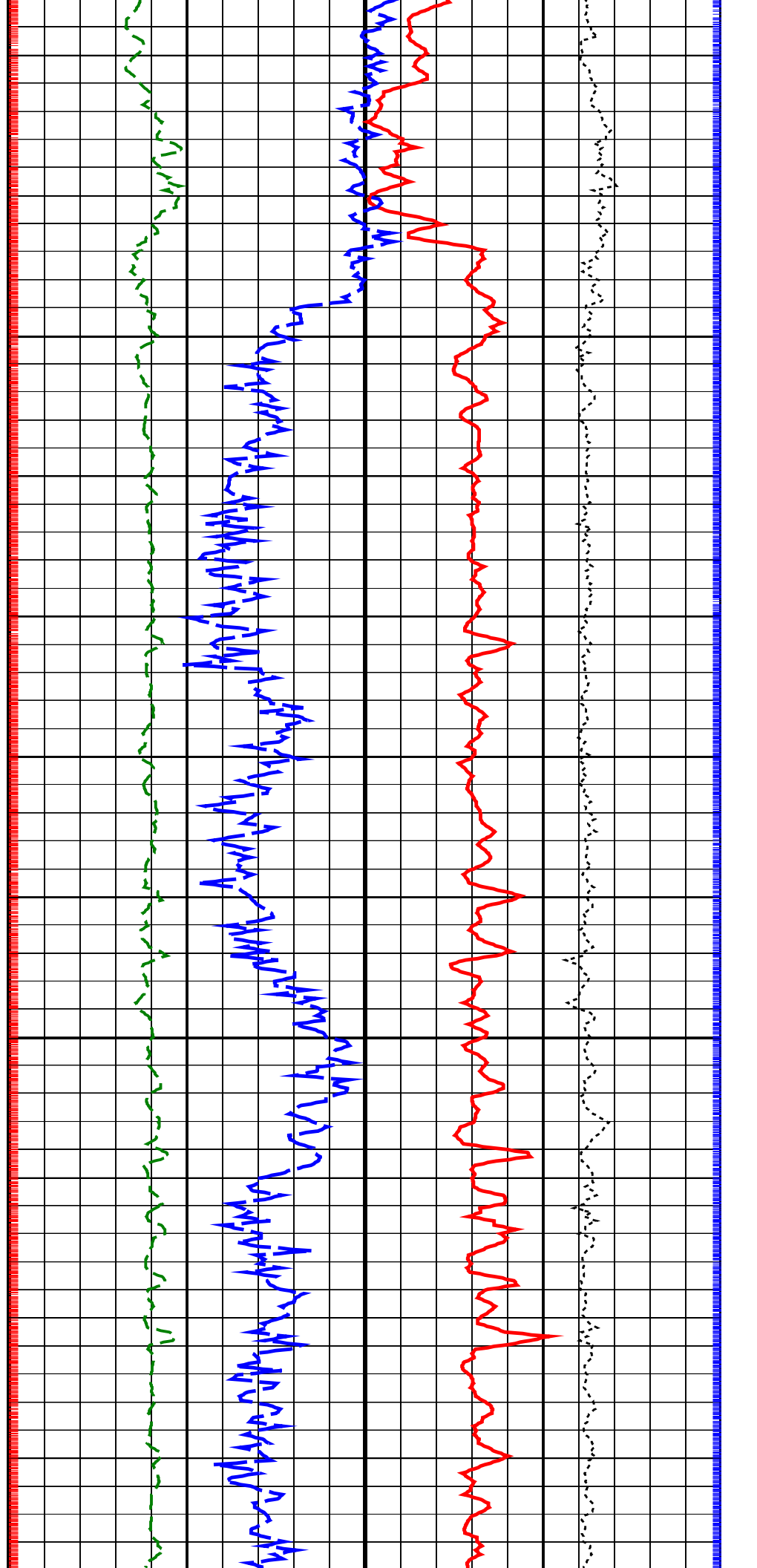
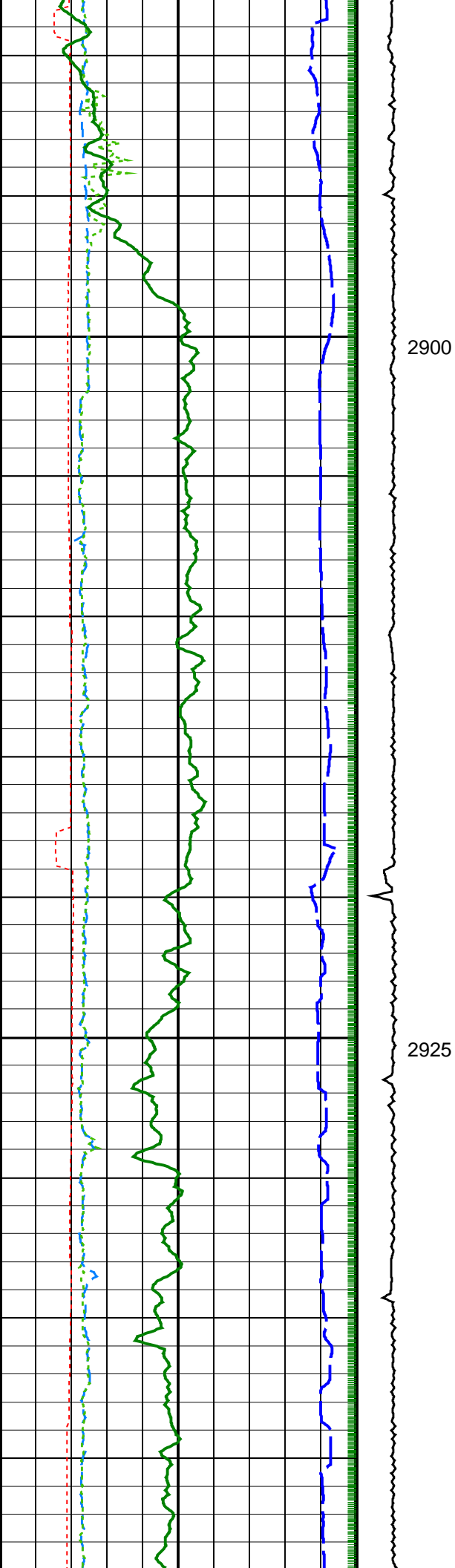
0 250

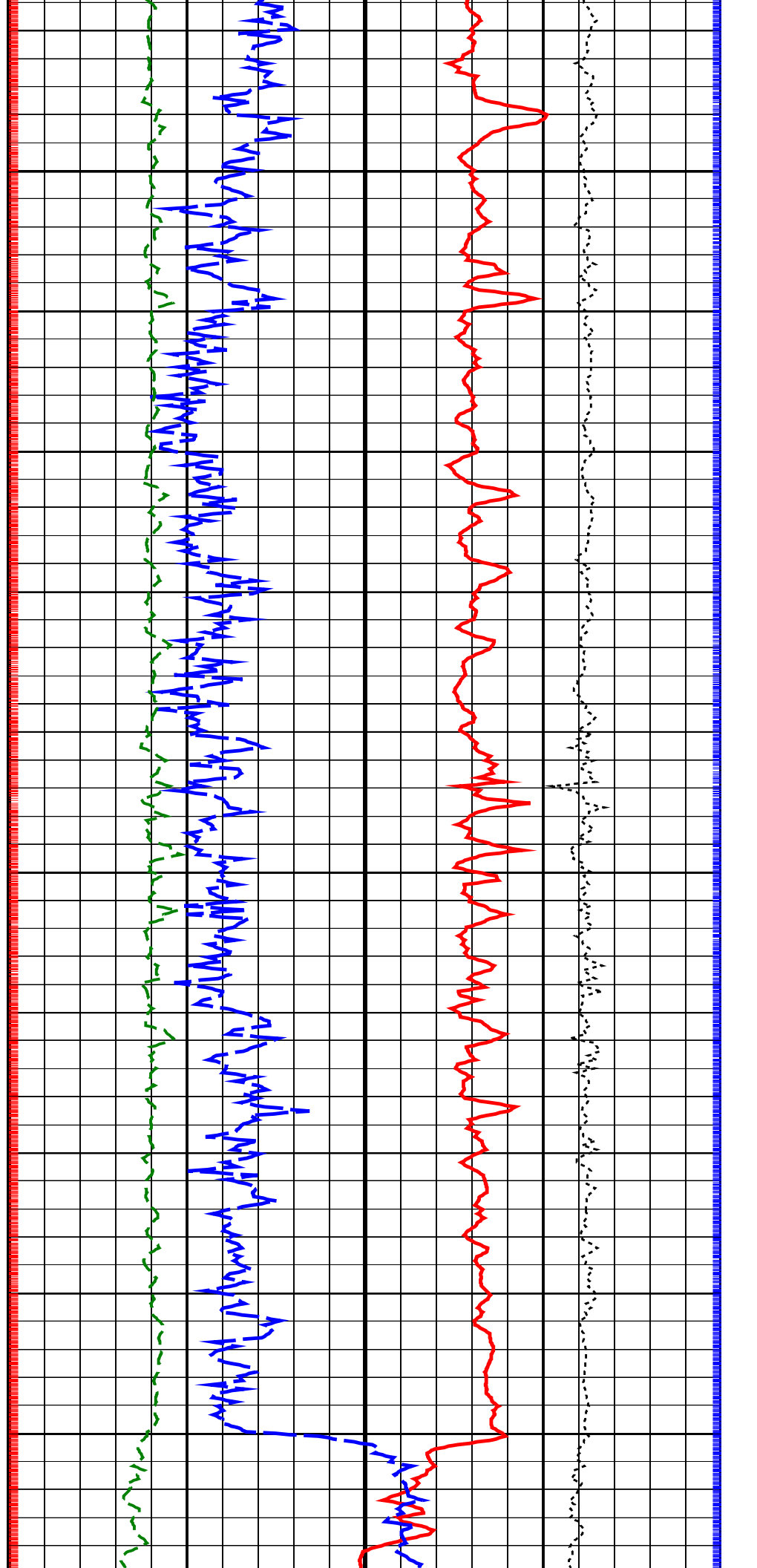
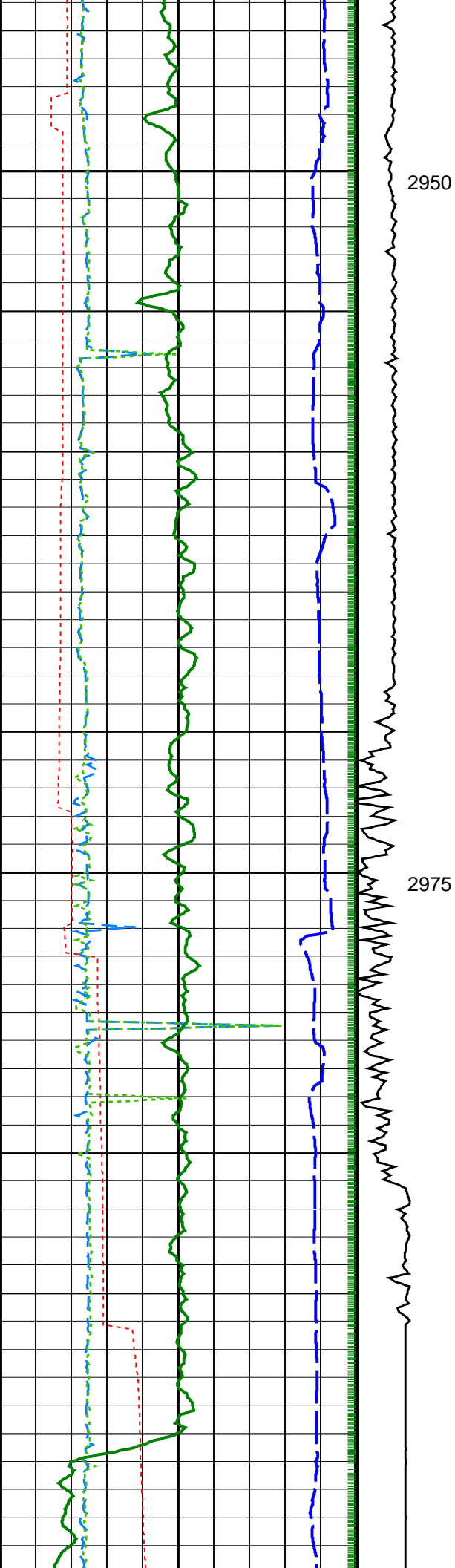
Bulk Density (RHOB)

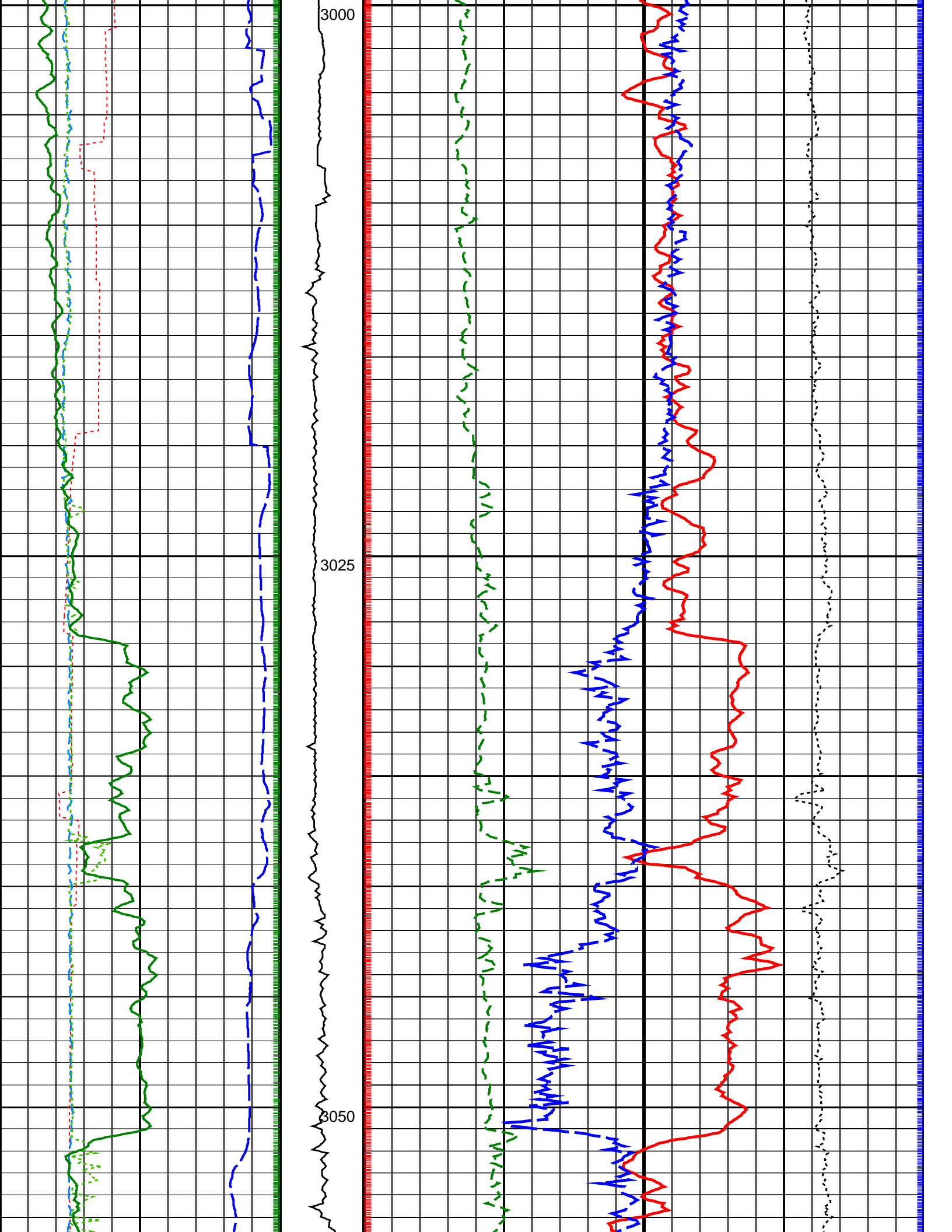
1.95 (G/C3) 2.95

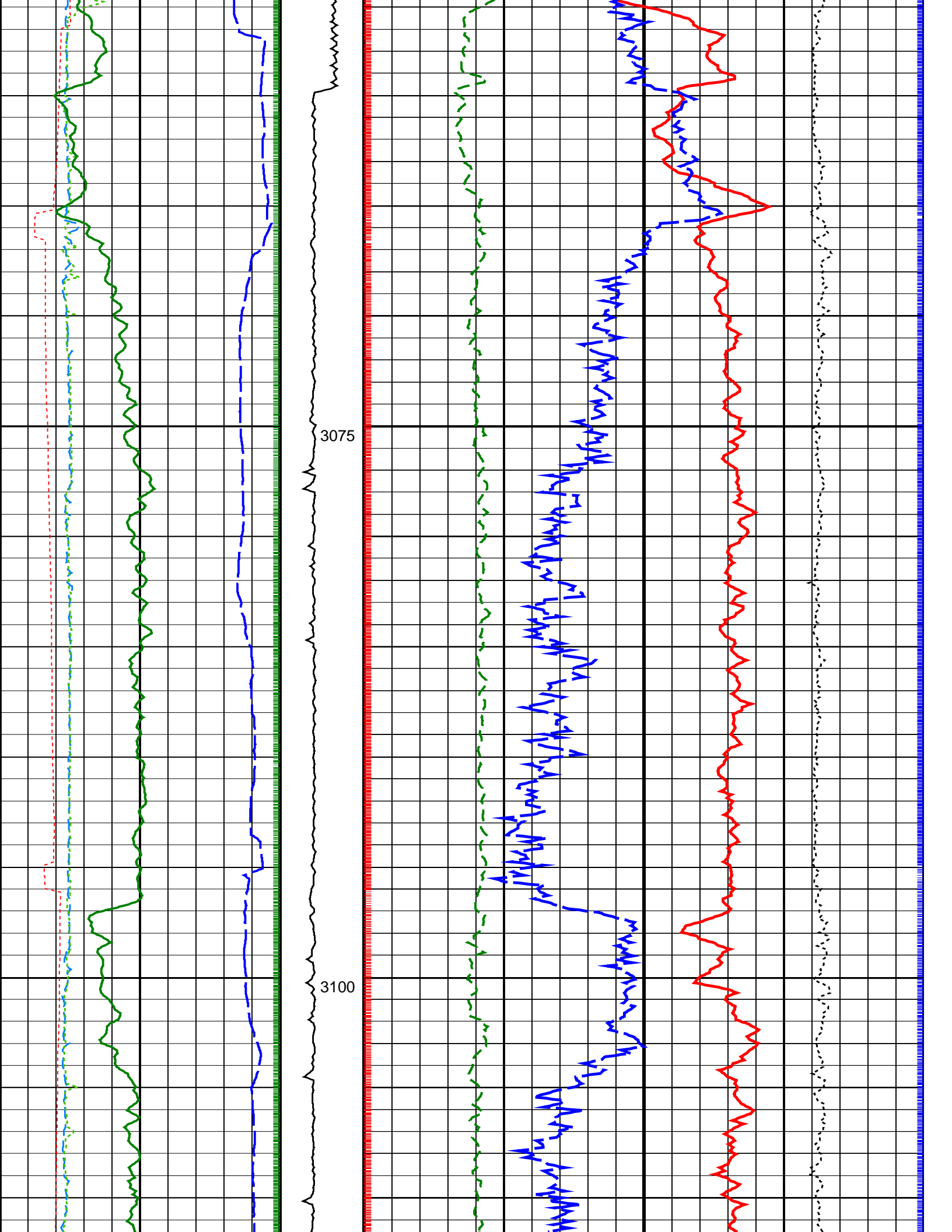


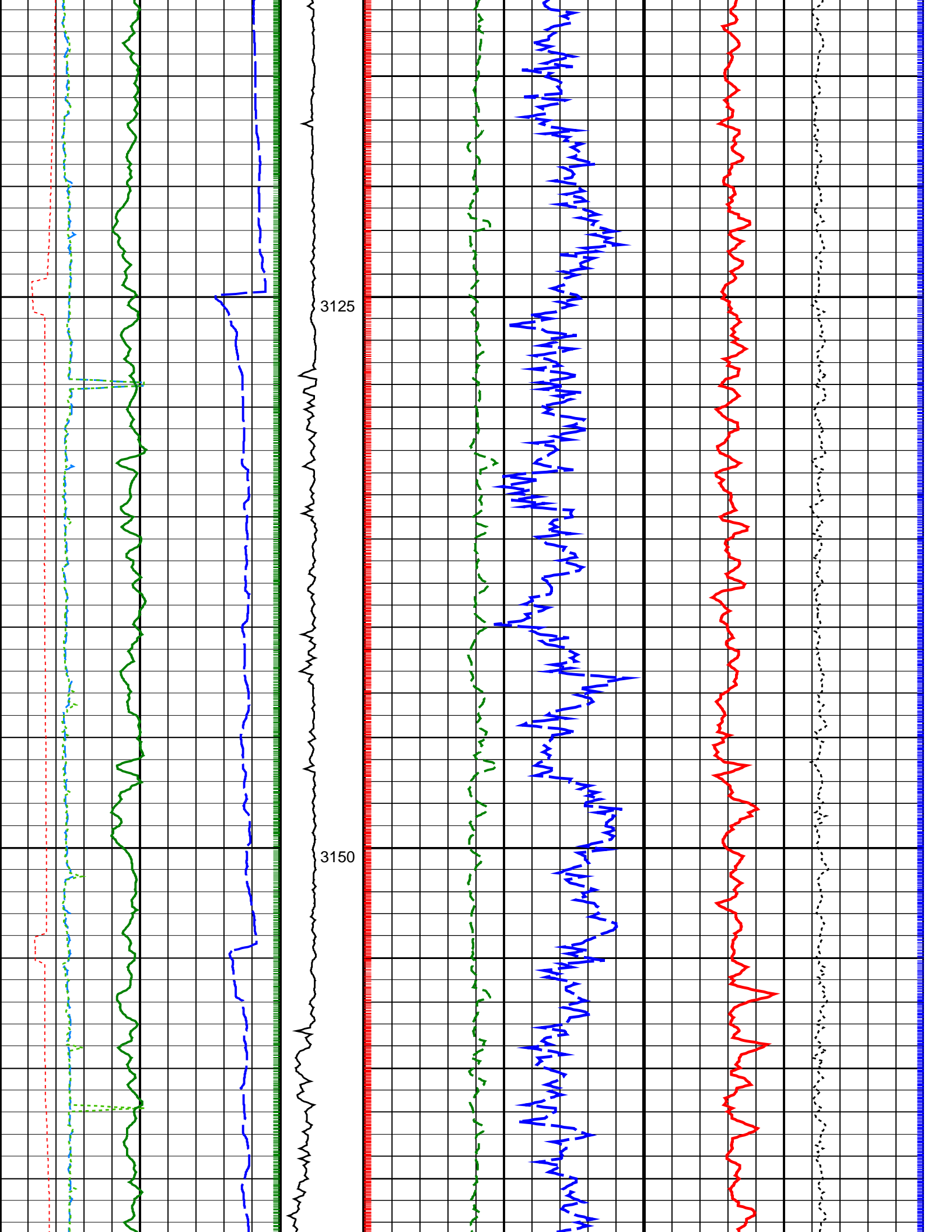


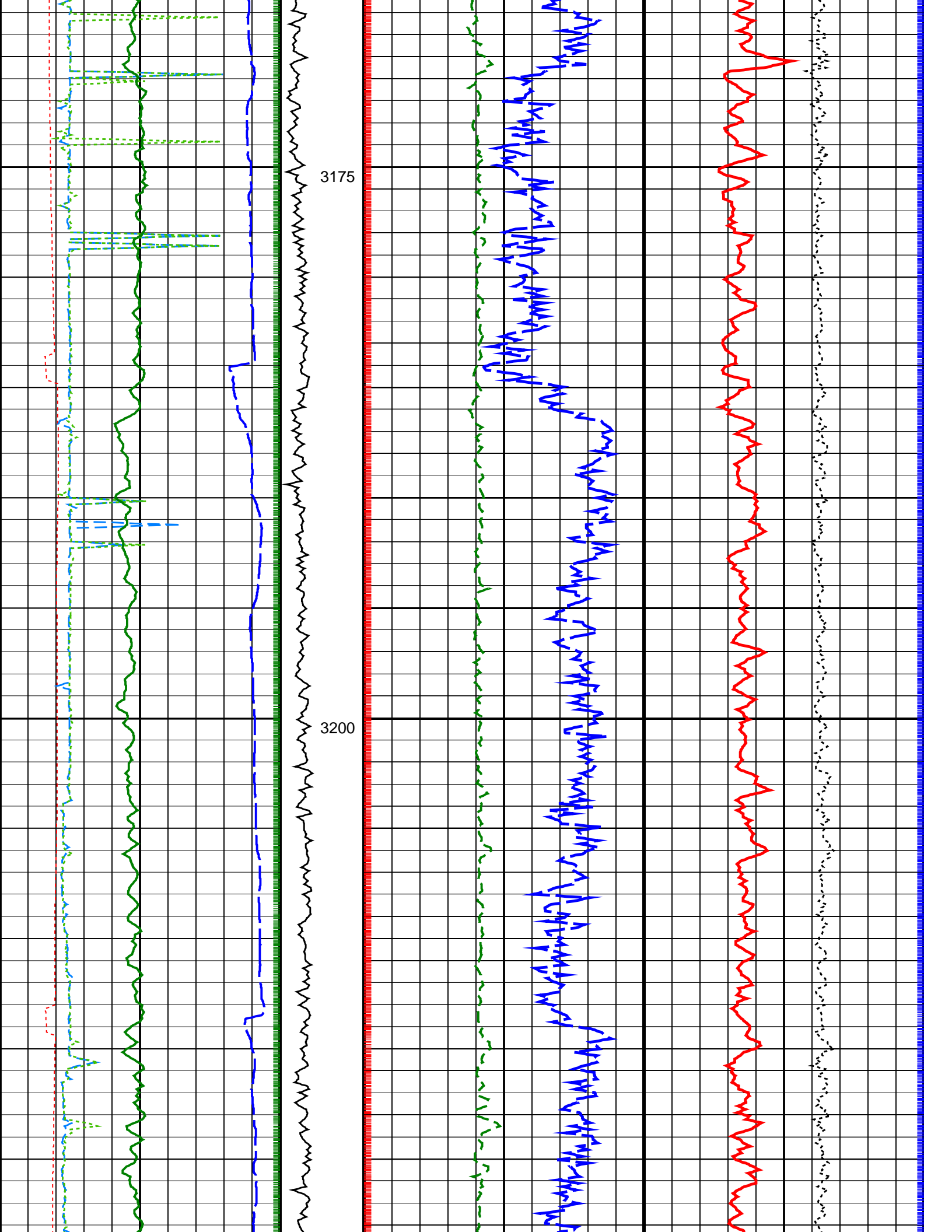




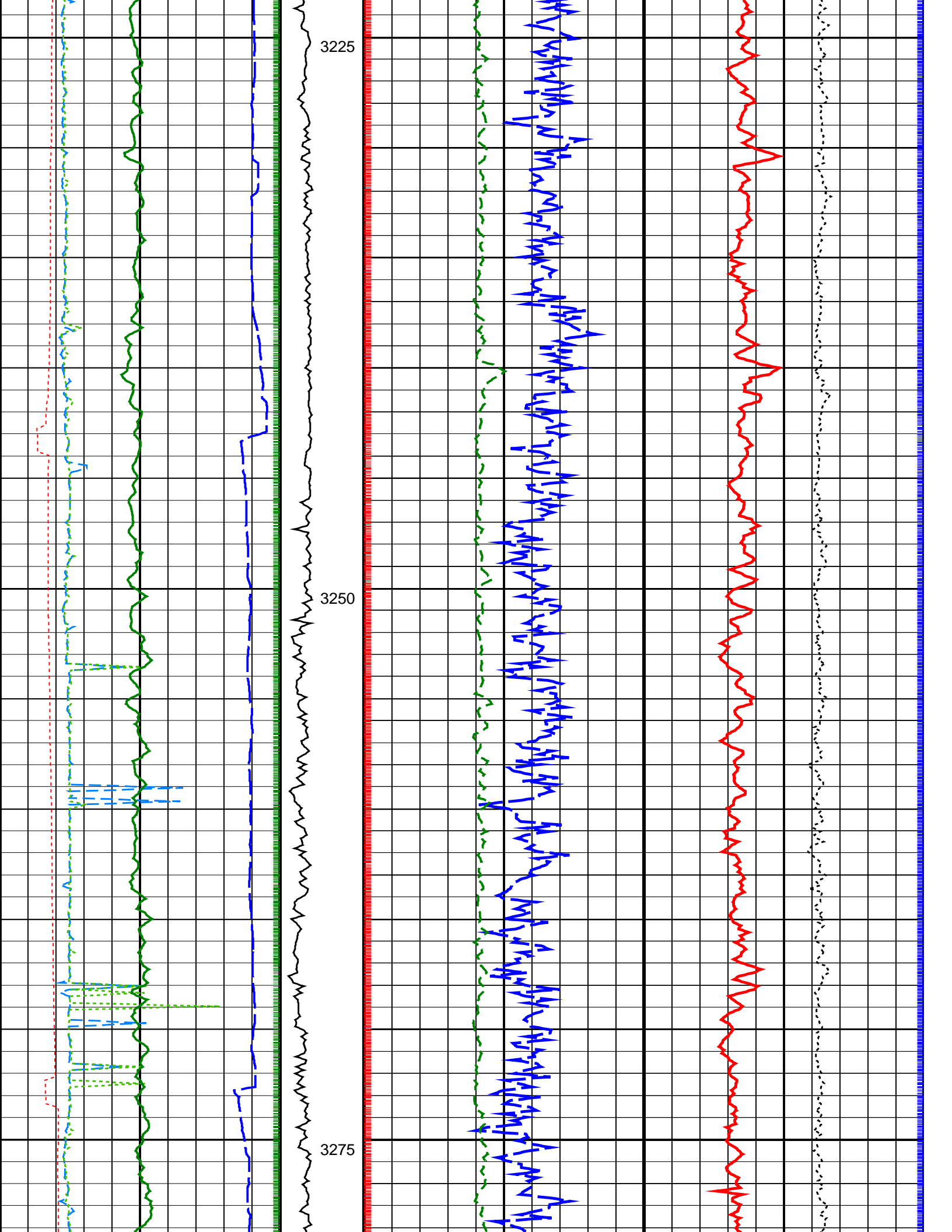


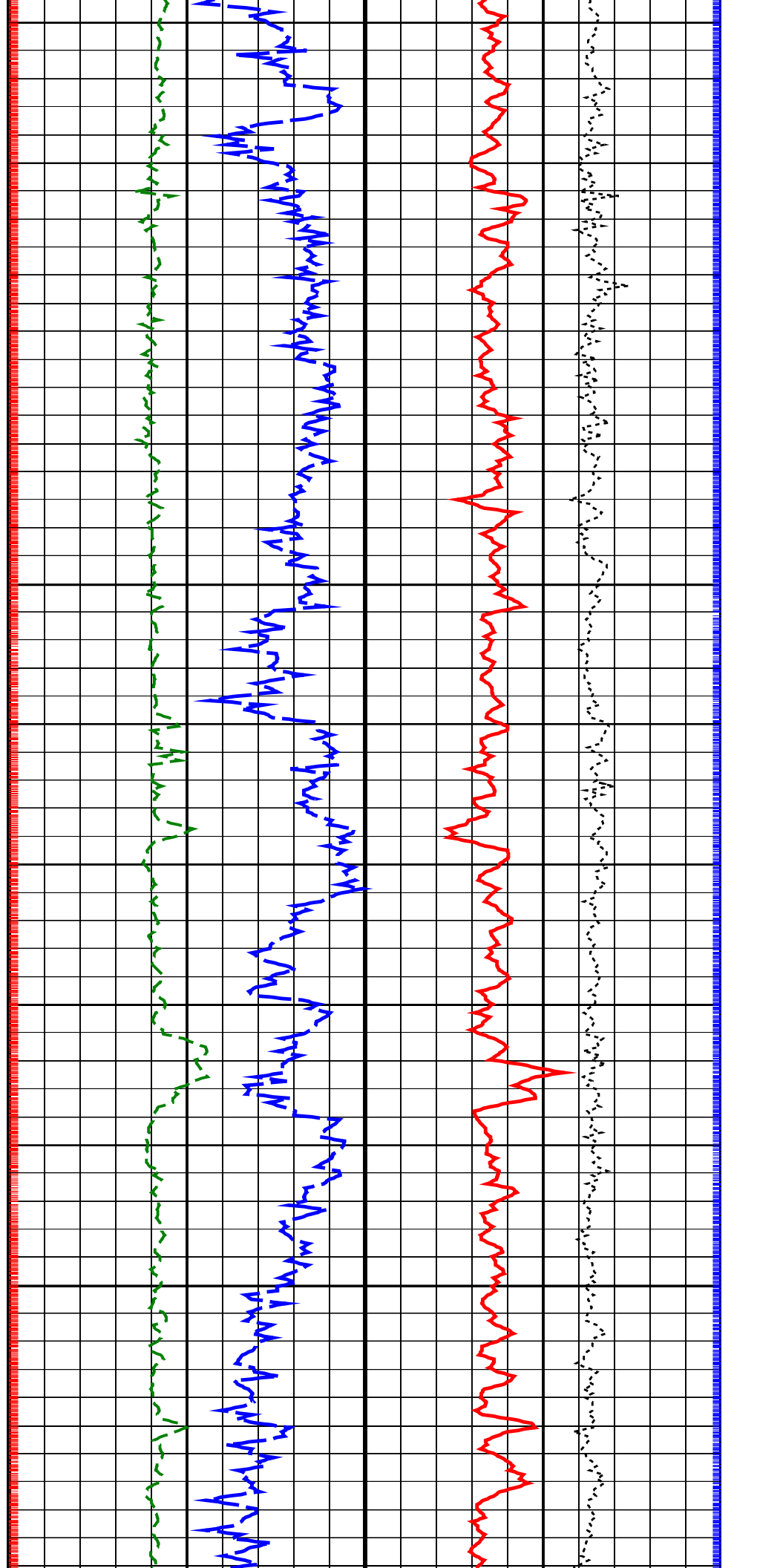
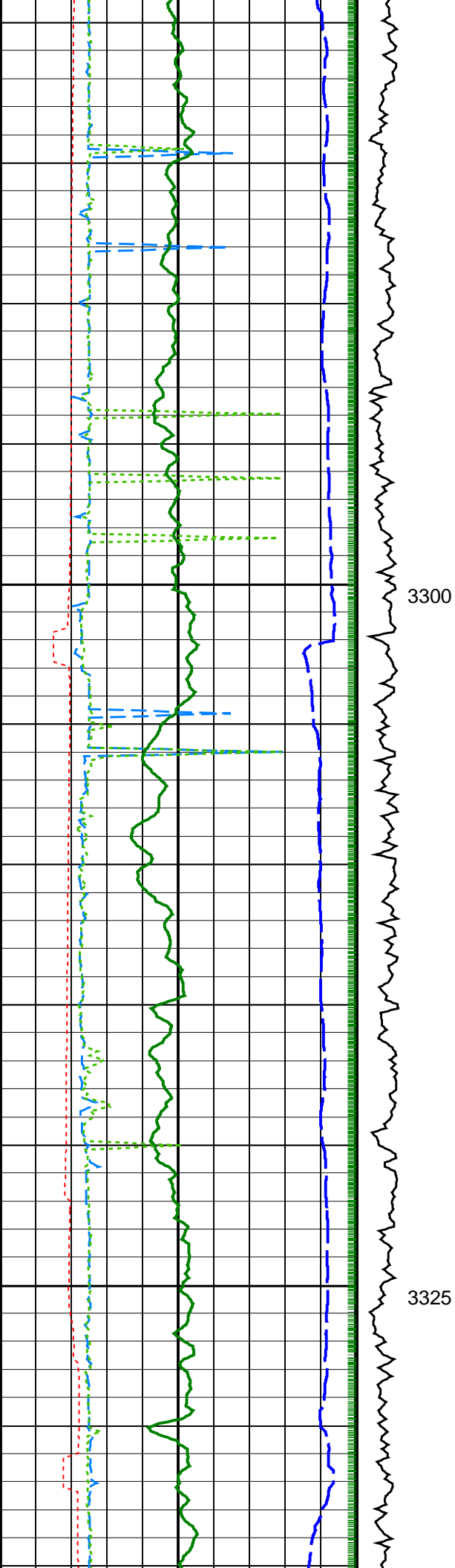


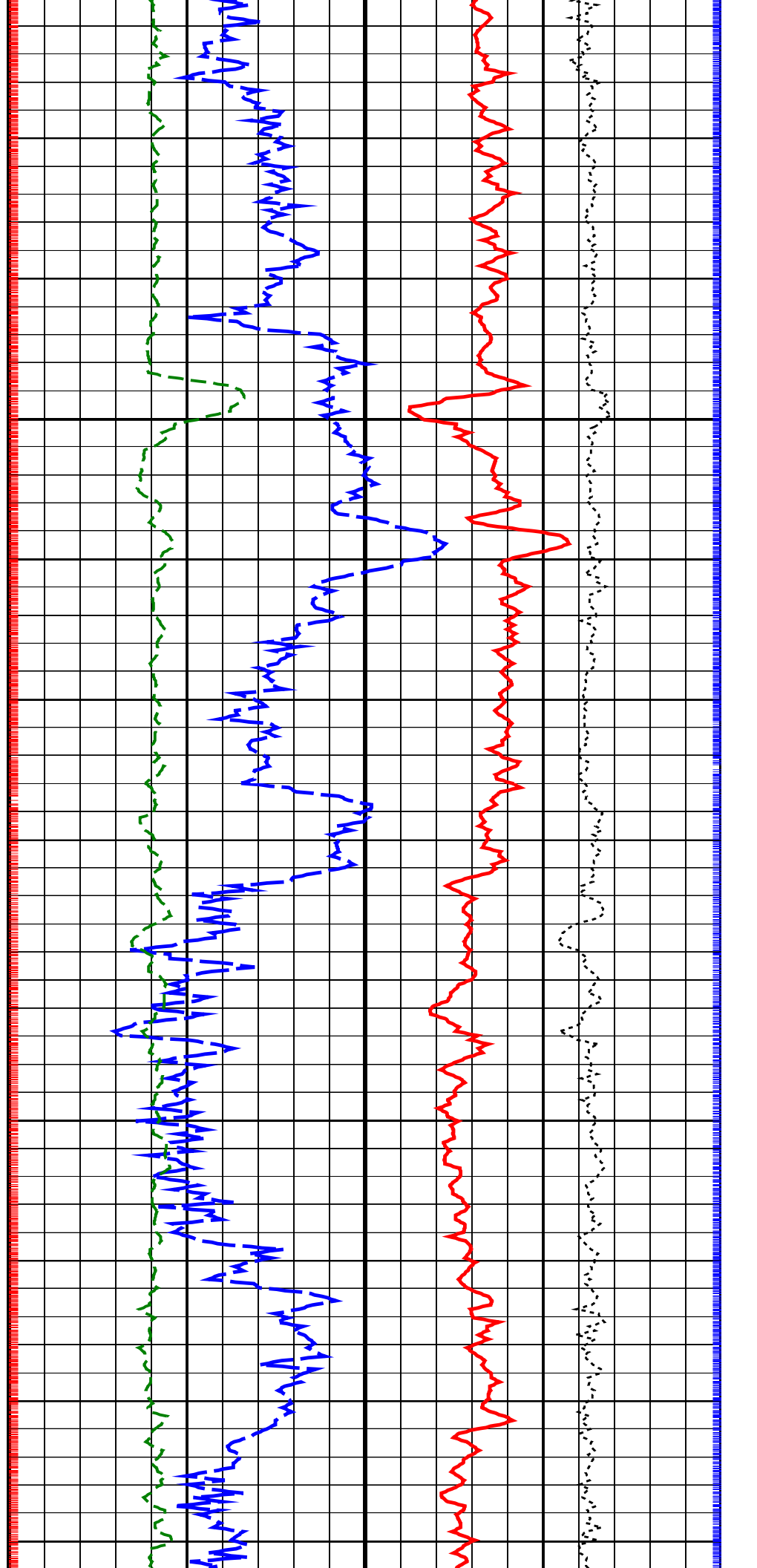
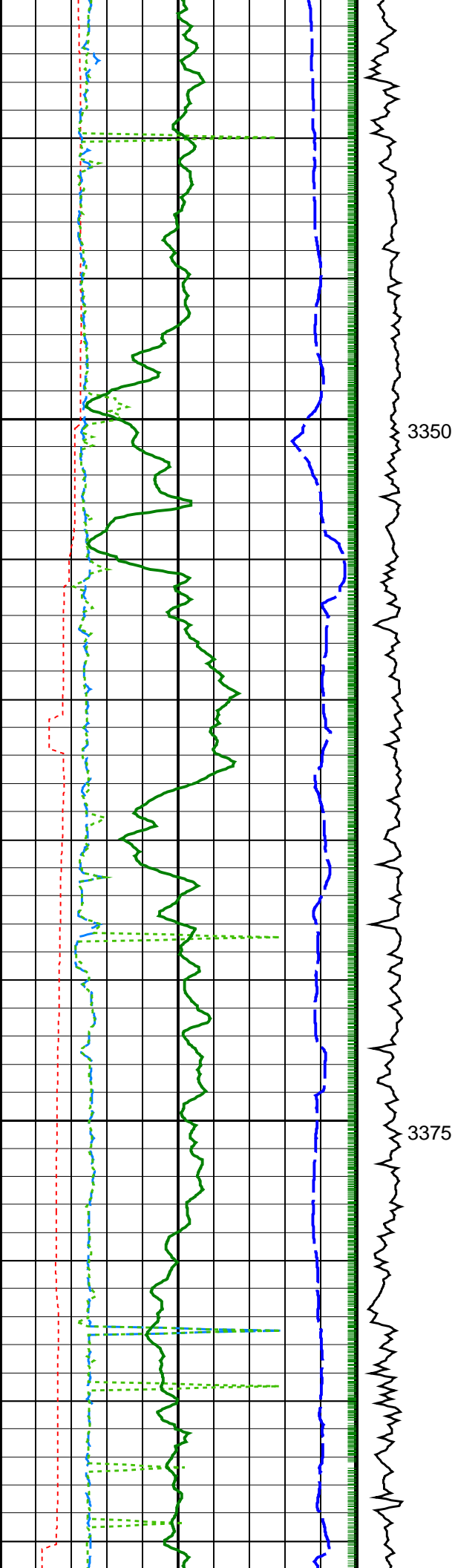


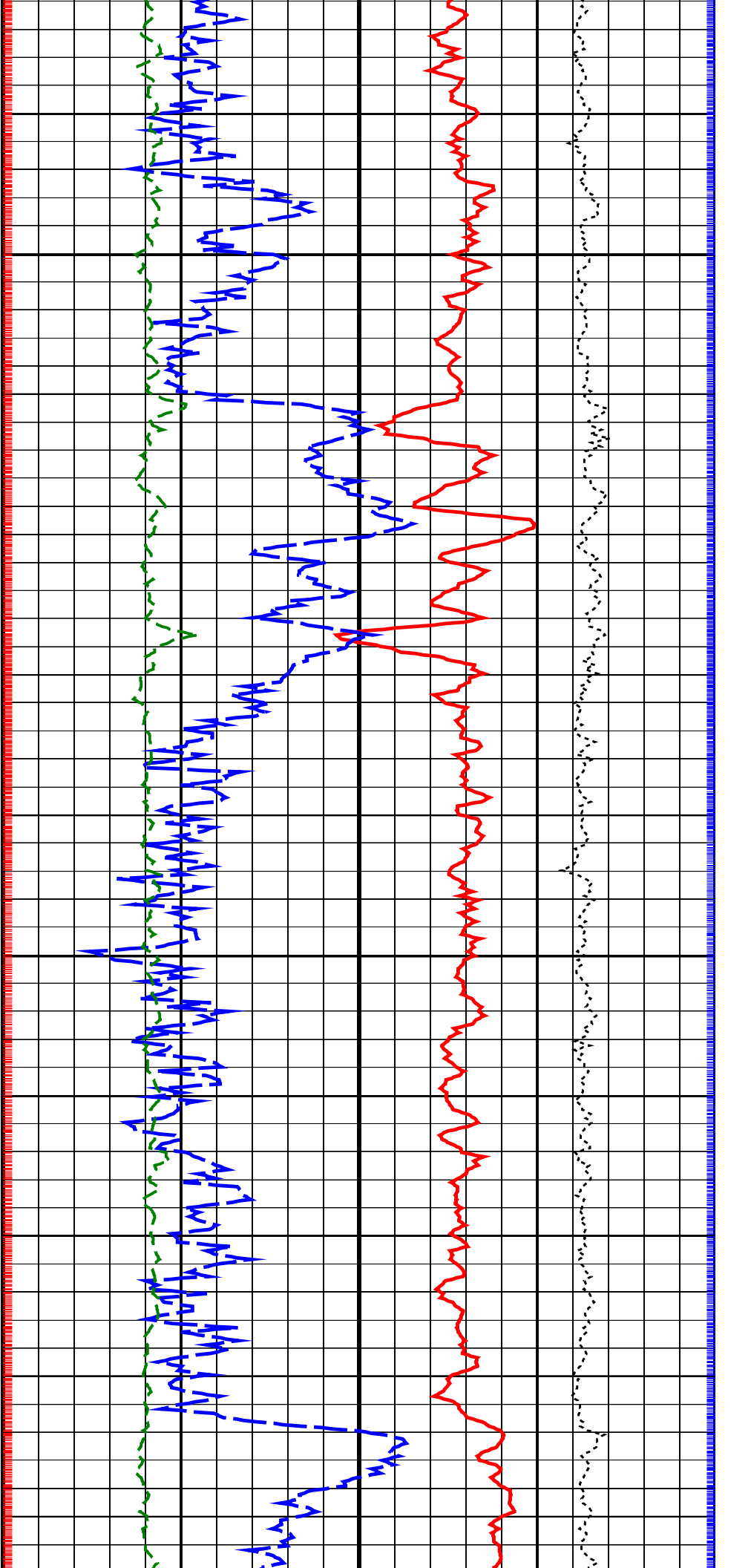
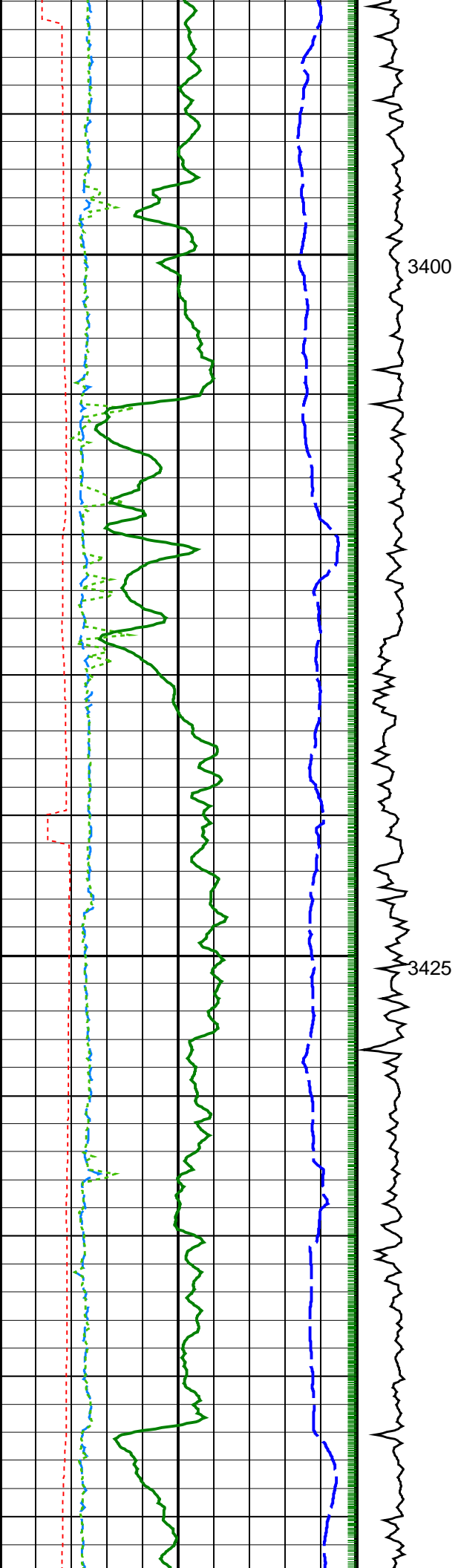


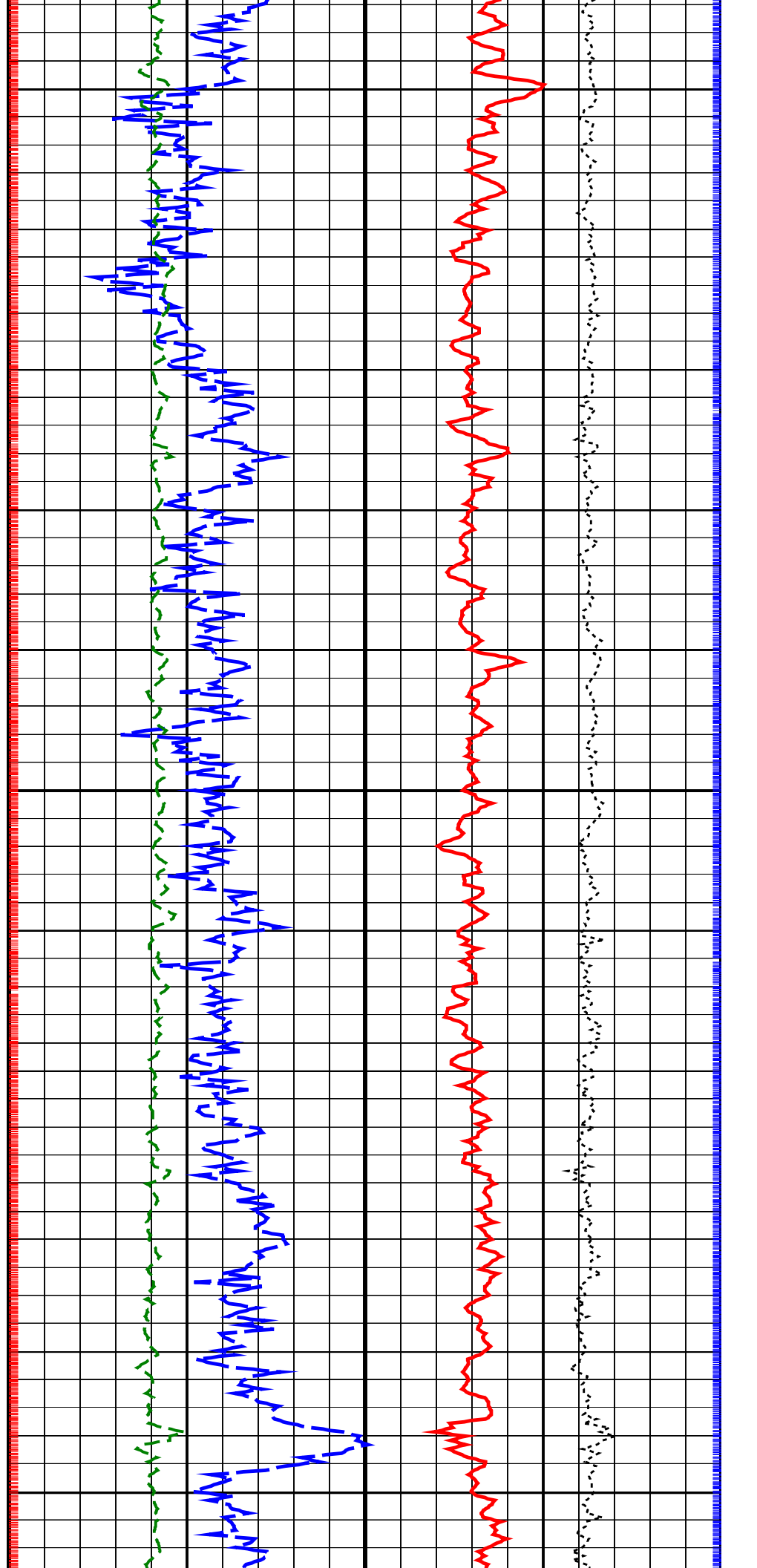
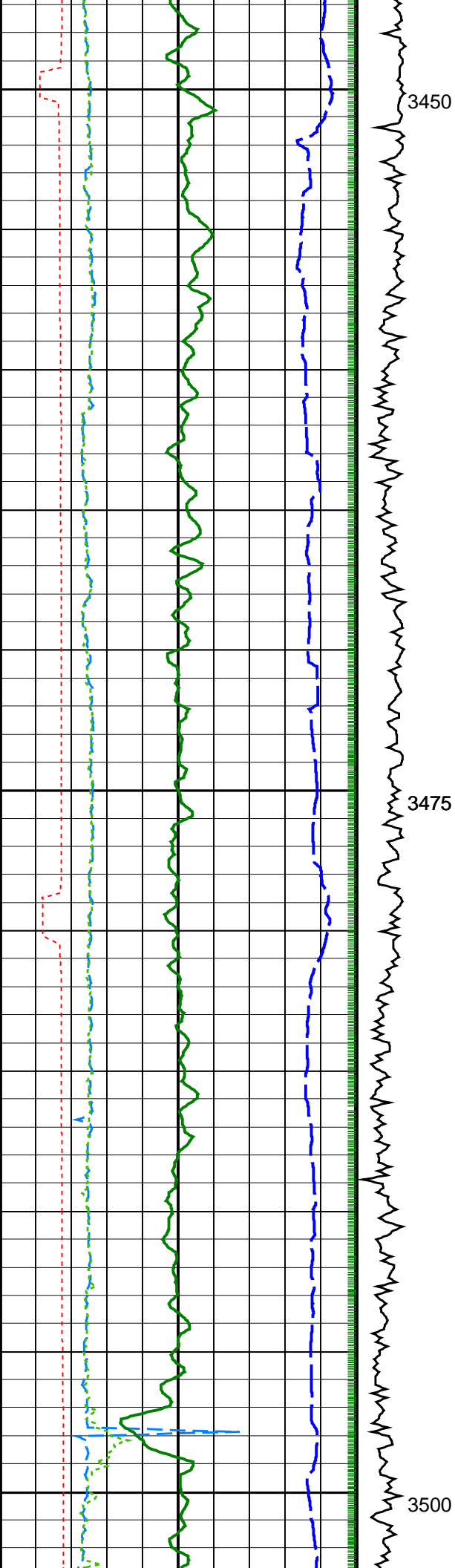


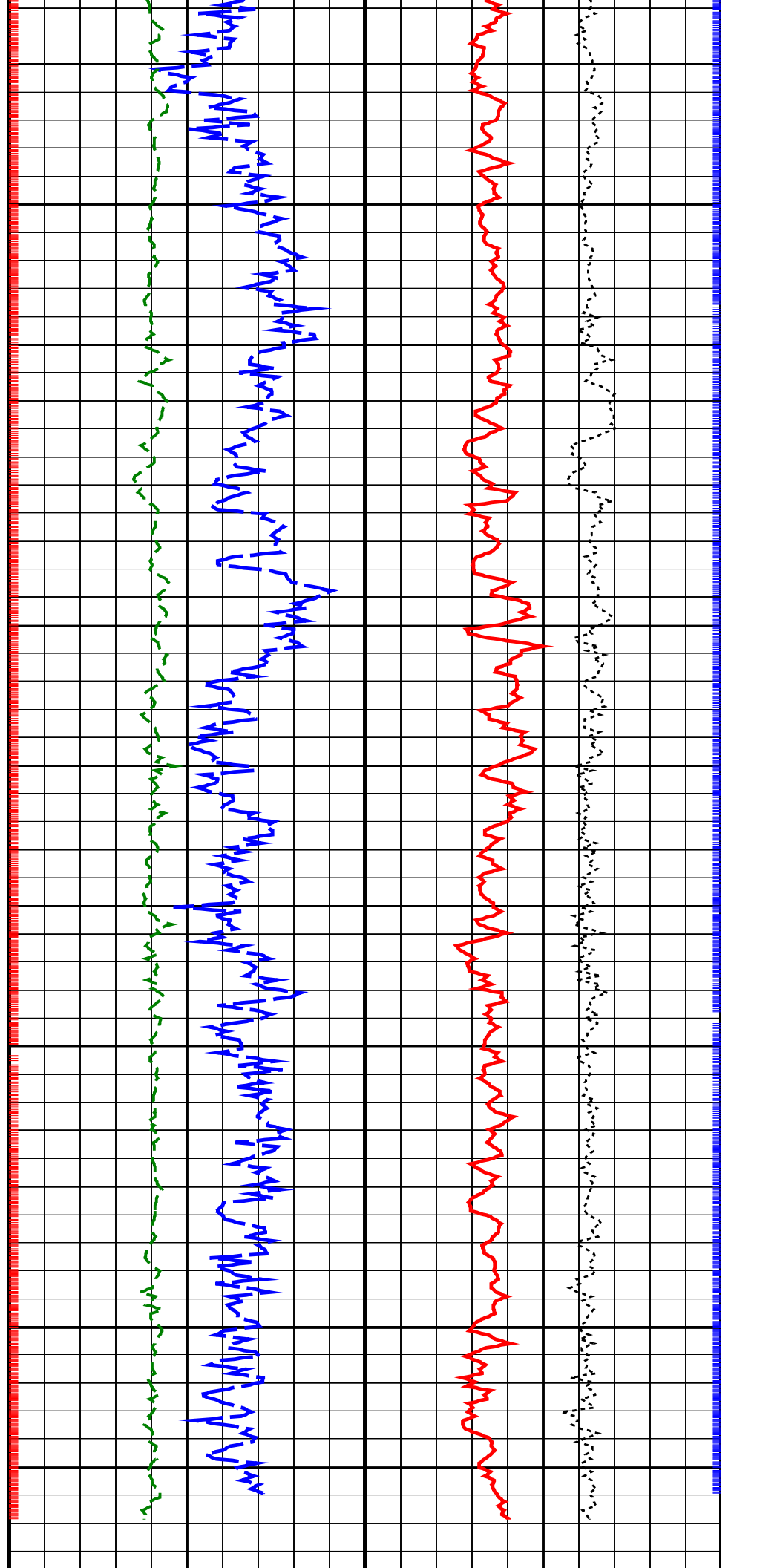
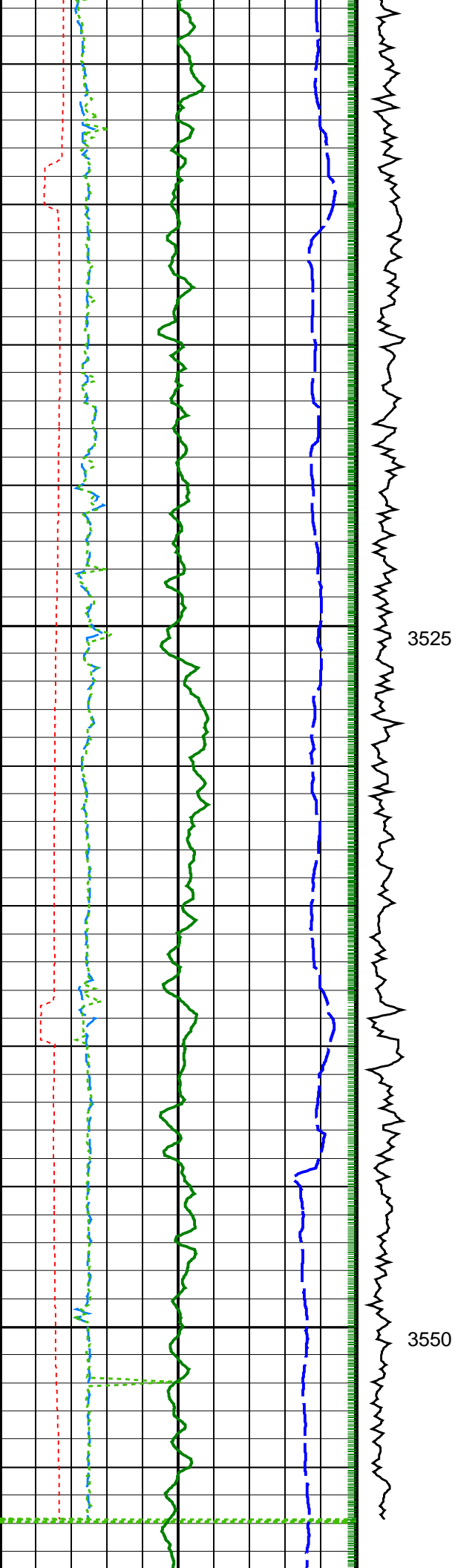


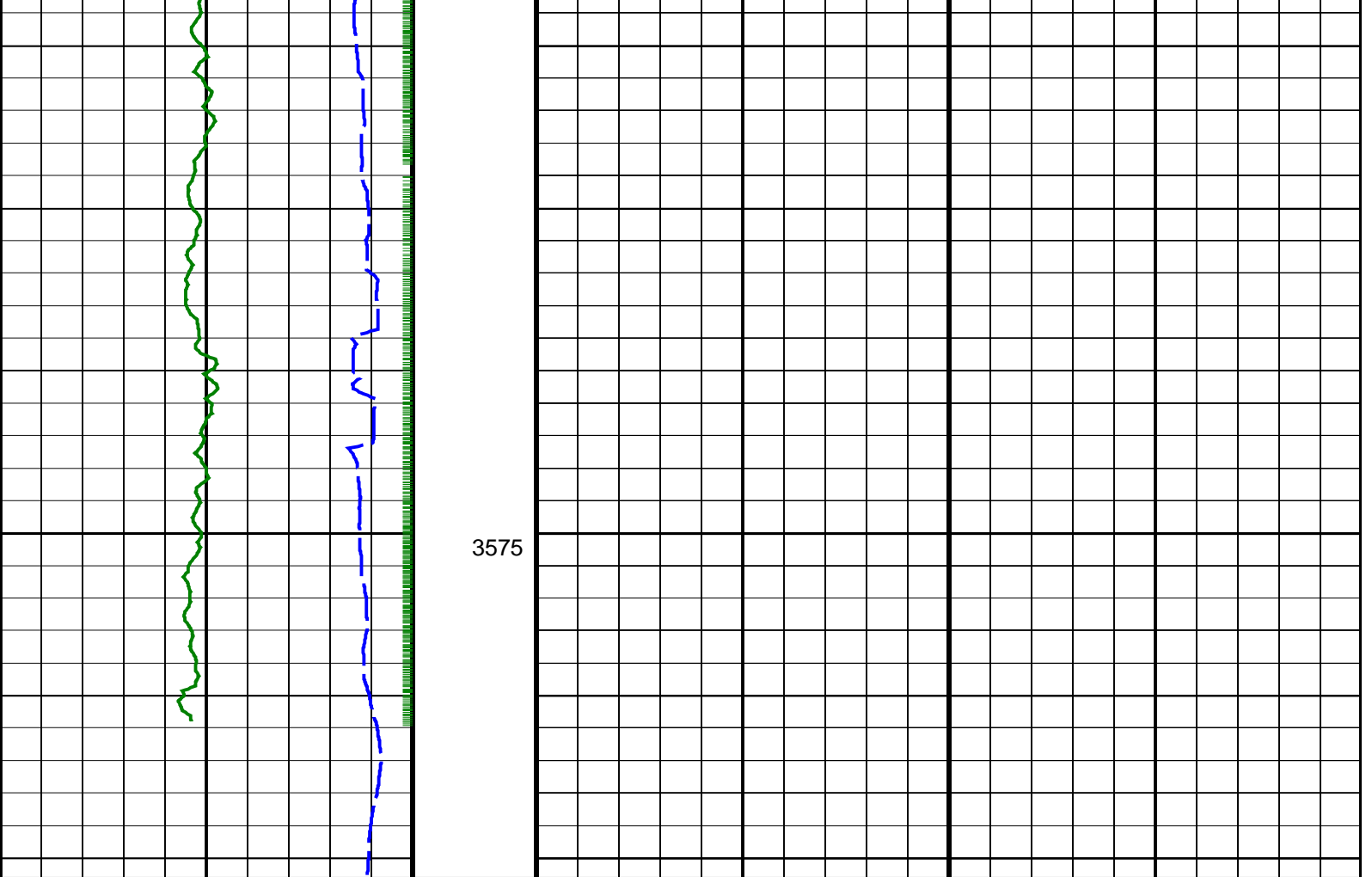












<b>Density Time After Bit (TAB_DEN)</b> 0 (HR) 10	<b>ADN Rotational Speed (RPM_ADN)</b> (RPM) 0 250	<b>Bulk Density (RHOB)</b> 1.95 (G/C3) 2.95	
<b>Horizontal Hole Diameter (HORD)</b> 6 (IN) 16		<b>Photoelectric Factor (PEF)</b> 0 (----) 10	<b>Bulk Density Correction (DRHO)</b> -0.25 (G/C3) 0.25
<b>Vertical Hole Diameter (VERD)</b> 6 (IN) 16	<b>Thermal Neutron Porosity (TNPH)</b> 45 (PU) -15		
<b>ARC Gamma Ray (GR_ARC)</b> 0 (GAPI) 200			
<b>Rate of Penetration, Averaged over Last 5ft (ROP5_RM)</b> 200 (M/HR) 0			

PIP SUMMARY

+ Density Samples  
 + ARC Gamma Ray Samples  
 Neutron Samples +